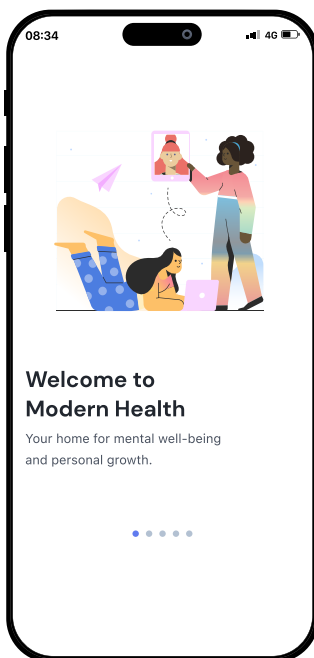


Modern Health for Adult Dependents (18+)

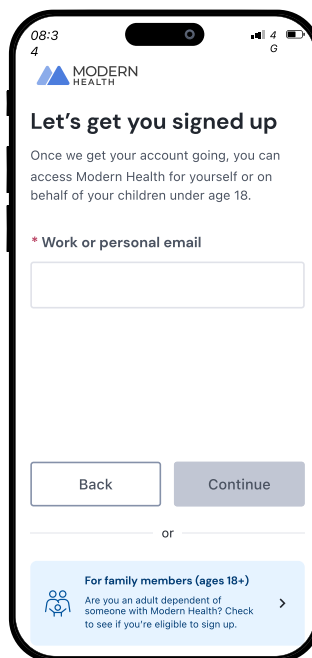
Modern Health is a mental wellness benefit that provides you access to personalized 1:1 support, group support, and self-serve resources so that you and your loved ones can be the best version of yourselves — at home, at work, and in your relationships.

If you're an adult dependent, you can sign up for and start using Modern Health without having to go through the primary benefit holder.

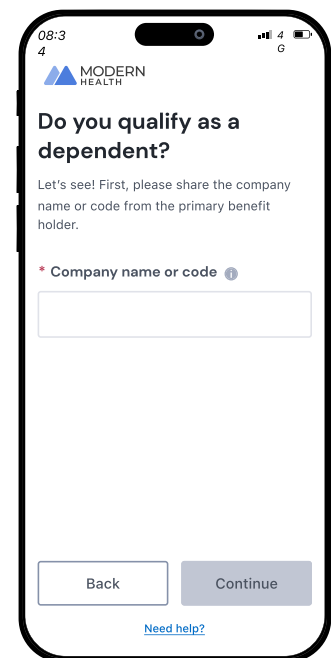
How to get started:



1. Download the Modern Health app. On the first screen you'll see a button prompting you to sign up.



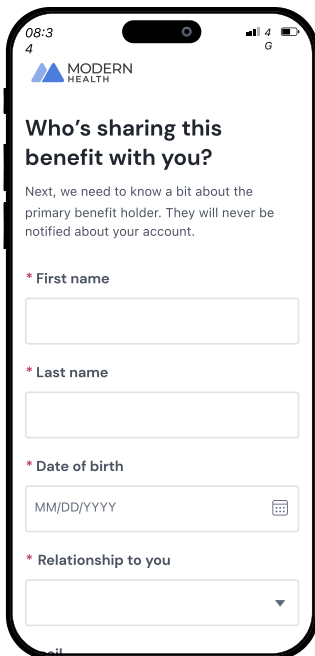
2. Enter your preferred email address.



3. Enter the company name or code to indicate how you're receiving this benefit. If you need help confirming the company's official name or code, try asking their benefits team.

Modern Health for Adult Dependents (18+)

How to get started (continued):



08:34
4

MODERN HEALTH

Who's sharing this benefit with you?

Next, we need to know a bit about the primary benefit holder. They will never be notified about your account.

* First name

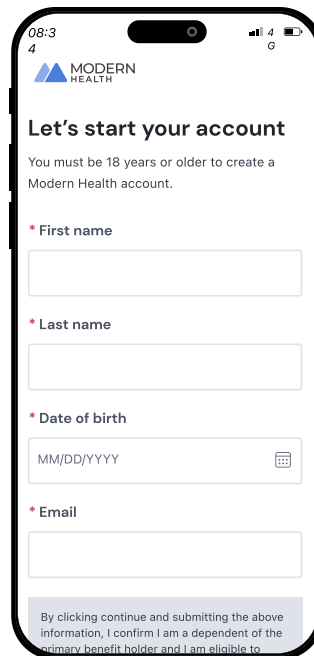
* Last name

* Date of birth

MM/DD/YYYY

* Relationship to you

4. Enter some information about the primary benefit holder. This will help confirm your eligibility.



08:34
4

MODERN HEALTH

Let's start your account

You must be 18 years or older to create a Modern Health account.

* First name

* Last name

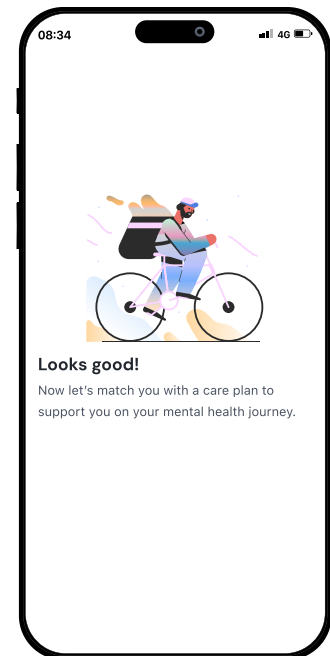
* Date of birth

MM/DD/YYYY

* Email


By clicking continue and submitting the above information, I confirm I am a dependent of the primary benefit holder and I am eligible to

5. Enter some basic information about yourself.



08:34

MODERN HEALTH



Looks good!

Now let's match you with a care plan to support you on your mental health journey.

6. Begin your Modern Health journey!

If you have trouble registering for Modern Health, please don't hesitate to reach out to help@modernhealth.com with a note or screenshot. The Modern Health member support team will verify the information against what they have on file with your employer to provide you the best instructions on how to successfully access Modern Health.