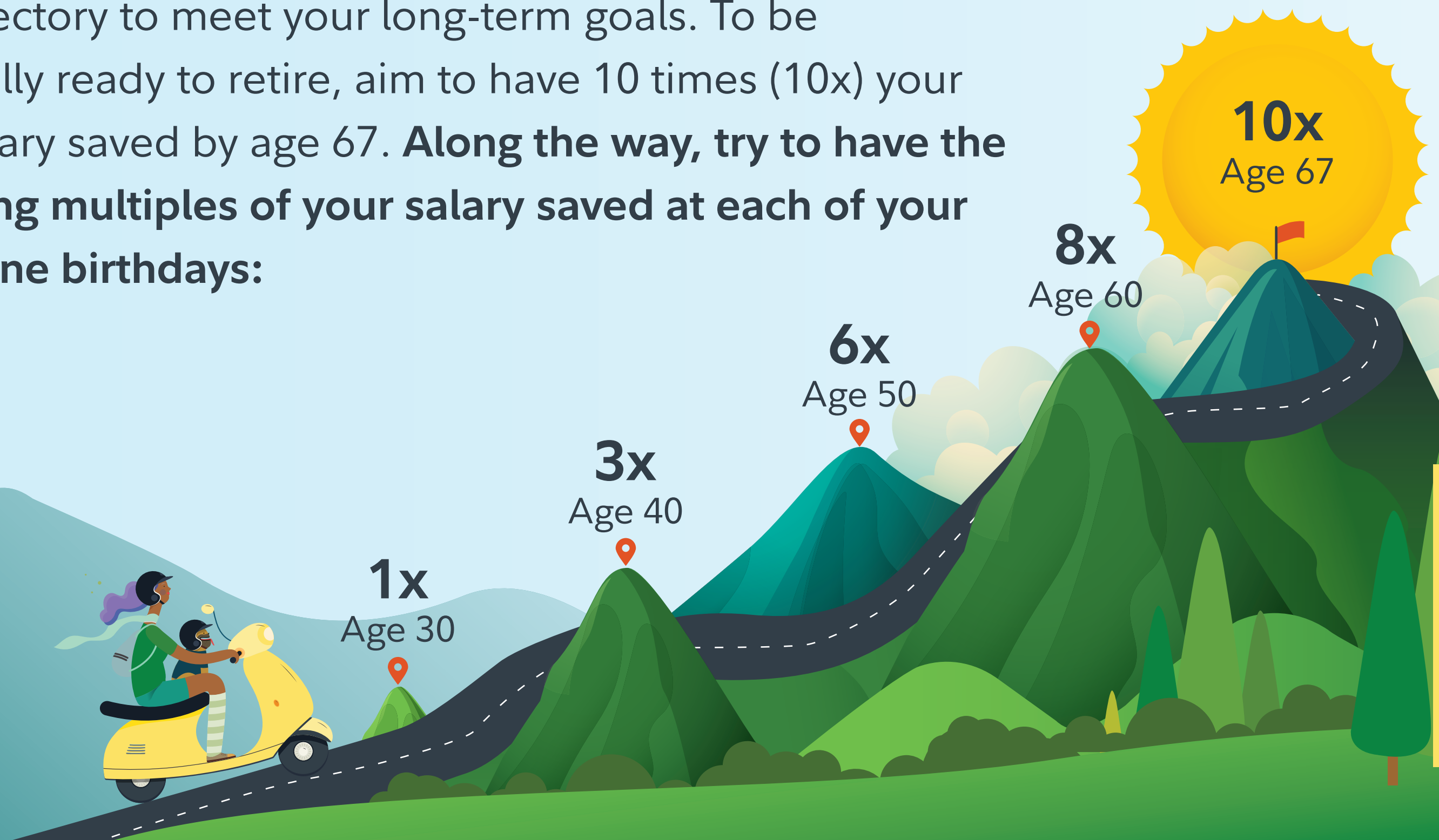


Keep moving on the road to retirement

Knowing how much to save for retirement can help you on the trajectory to meet your long-term goals. To be financially ready to retire, aim to have 10 times (10x) your final salary saved by age 67. **Along the way, try to have the following multiples of your salary saved at each of your milestone birthdays:**



Fidelity suggests saving at **least 15% of your income for retirement**, including employer contributions. If you're off track consider:

- 📍 Saving enough to get your full company match.
- 📍 Increasing your savings rate by at least 1% every year.



Learn more by visiting [Netbenefits®](#) today, or **SCAN** to learn more. Hover your phone's camera over the code. **NO APP NEEDED!**

Fidelity has developed a series of salary multipliers in order to provide participants with one measure of how their current retirement savings might be compared to potential income needs in retirement. The salary multiplier suggested is based solely on your current age. In developing the series of salary multipliers corresponding to age, Fidelity assumed age-based asset allocations consistent with the equity glide path of a typical target date retirement fund, a 15% savings rate, a 1.5% constant real wage growth, a retirement age of 67 and a planning age through 93. The replacement annual income target is defined as 45% of pre-retirement annual income and assumes no pension income. This target is based on Consumer Expenditure Survey 2011 (BLS), Statistics of Income 2011 Tax Stat, IRS 2014 tax brackets and Social Security Benefit Calculators. Fidelity developed the salary multipliers through multiple market simulations based on historical market data, assuming poor market conditions to support a 90% confidence level of success.

These simulations take into account the volatility that a typical target date asset allocation might experience under different market conditions. Volatility of the stocks, bonds and short-term asset classes is based on the historical annual data from 1926 through the most recent year-end data available from Ibbotson Associates, Inc. Stocks (domestic and foreign) are represented by Ibbotson Associates SBBI S&P 500 Total Return Index, bonds are represented by Ibbotson Associates SBBI U.S. Intermediate Term Government Bonds Total Return Index, and short term are represented by Ibbotson Associates SBBI 30-day U.S. Treasury Bills Total Return Index, respectively. It is not possible to invest directly in an index. All indices include reinvestment of dividends and interest income. All calculations are purely hypothetical and a suggested salary multiplier is not a guarantee of future results; it does not reflect the return of any particular investment or take into consideration the composition of a participant's particular account. The salary multiplier is intended only to be one source of information that may help you assess your retirement income needs. Remember, past performance is no guarantee of future results. Performance returns for actual investments will generally be reduced by fees or expenses not reflected in these hypothetical calculations. Returns also will generally be reduced by taxes.

This information is intended to be educational and is not tailored to the investment needs of any specific investor.

Investing involves risk, including risk of loss.

Fidelity Brokerage Services LLC, Member NYSE, SIPC, 900 Salem Street, Smithfield, RI 02917 © 2021 FMR LLC. All rights reserved. 817273.3.0

